

Torrance County
Resolution Number 2024- 38
A Resolution Amending Resolution R-2024-15
Designating Polling Places and Locations
for all Regular Local and Statewide Elections Conducted in
2023 and 2024

WHEREAS, pursuant to the New Mexico Statutes Annotated 1978, Section 1-3-2 (2019) in June or July of 2023 the Board of County Commissioners by resolution shall designate the polling places in the county for the conduct of any Regular Local statewide Election conducted in calendar years 2023 and 2024; and,

WHEREAS the Board of County Commissioners finds that each polling place designated in this resolution complies with provisions of NM SA 1978, Section 1-3-7 (2019), titled Polling Places; and,

WHEREAS the Board of County Commissioner previously did so with Resolution 2023-21 ON July 12, 2023; and,

WHEREAS it has become necessary to amend the location of one polling place since then; specifically, to change the polling place from the Willard Community Center located 520 N. Becker, Willard, N.M. to the Willard Fire Station located at 705 Dunlavy, Willard, N.M. 87063.

WHEREAS, the Board of County Commissioners finds that the Voting Convenience Centers created by this resolution will make voting more convenient and accessible to voters of the consolidated precinct, will not result in delays in the voting process, and are centrally located within each consolidated precinct; and further that the Voter Convenience Centers created by the Resolution along with any Early Voting locations which the County Clerk determines to maintain open on Election Day as a Voter Convenience Center all meet the requirements of Subsection B and C of NMSA 1978, Section 1-3-4 (2019) and will be available to voters of any precinct in the county to cast a vote at any Election Day Voting Convenience Center; and,

WHEREAS the Board of County Commissioners finds that each polling place provides individuals with physical mobility limitations and an unobstructed access to at least one voting machine; and,

NOW, THEREFORE, BE IT RESOLVED that the Board of County Commissioners designates the polling place locations for any Statewide Election to be conducted in 2024 and 2025 as follows:

TORRANCE COUNTY

POLLING PLACES AND ADDRESSES

Estancia High School Gym: 709 Hopewell Estancia, NM 87016
Dr. Saul Community Center: 111 N. Roosevelt Ave Mountainair, NM 87036
Torreon Community Center: 18 Torreon Heights Rd Torreon, NM 87061
Willard Fire Station: 705 Dunlavy, Willard, NM 87063
Duran Community Center 15 Vidal Street Duran, NM 88319
Encino Community Center: 427 B North Main Street, Encino, NM 88321
McIntosh Senior Center: 79 Willow Lake Rd. McIntosh, NM 87032
Moriarty Civic Center: 202 Broadway Ave Moriarty, NM 87035
Moriarty/Edgewood Admin Bldg.: 2422 US Route 66 Moriarty, NM 87035
Manzano Community Center: 04 Community Center Rd Manzano, NM 87036
Tajique Community Center: 8636 Hwy 55 Tajique, NM 87016

EARLY-IN PERSON: TORRANCE COUNTY ADMINISTRATIVE OFFICE

205 S. 9th Street, Estancia, New Mexico 87016

ALTERNATE EARLY/IN PERSON: MORIARTY CIVIC CENTER

202 Broadway Ave., Moriarty, New Mexico 87035

ABSENTEE BY MAIL: TORRANCE COUNTY ADMINISTRATIVE OFFICE

205 S. 9th Street, Estancia, New Mexico 87016

Absentee by Mail:

205 S. NINTH STREET ESTANCIA, NM 87016

PASSED, APPROVED AND ADOPTED this 9th day of October, 2024.

BOARD OF COUNTY COMMISSIONERS:



Ryan Schwebach, Chair District 2



Kevin McCall, Vice-Chair District 1



Samuel Schropp, Member District 3

APPROVED AS TO FORM:



Michael I Garcia-County Attorney

ATTEST:



Linda Jaramillo-County Clerk

SEAL



Disability Rights New Mexico Polling Site Survey Report

Date: 09/17/2024

Date of survey: 09/12/2024

County: Torrance

Polling site: Willard Community Center

Address: 520 N. Becker Ave
Willard, NM 87063

Surveyors: Annie Elliott
aelliott@drnm.org

Surveyor Phone: 505-256-3100

Report by: Annie Elliott

Disability Rights New Mexico's polling site surveys are conducted using the guidance of the U.S. Department of Justice's [ADA Checklist for Polling Places](#).

Parking

- 1. Are there designated van accessible parking spaces measuring at least a 96" wide with a 96" wide access aisle, or 132" wide with a 60" wide access aisle? (total 192")**

This site has no marked accessible spaces for vans or cars.

- 2. Are there designated car accessible parking spaces measuring at least 96" wide with a 60" access aisle (total 156") or parking spaces that measure 132" with a 60" access aisle? (total 192)**

This site has no marked accessible spaces for vans or cars.

- 3. Are the accessible parking spaces and access aisles clearly marked and identifiable?**

No.

- 4. Are the designated parking spaces located closest to the polling site entrance?**

Though there are no designated accessible parking spaces, the parking area in general is quite far (at least 200 ft) away from the entrance to the community center.

- 5. Do the accessible parking spaces have visible signs mounted 5 to 7 feet above the ground?**

No signage is present in the parking area.

6. Does the slope of the accessible parking spaces meet the ADA requirement of no more than a 2% slope in any direction?

While the parking area itself is relatively level, the gravel path from the parking to the sidewalk is sloped upward beyond ADA requirements.

7. Does the parking lot have any of the following access issue: covered in gravel, cracked pavement, large cracks or gaps between asphalt and curb cut, rutted or muddy surface or bumps?

Yes, the spaces are unpaved and covered with gravel and weeds.

Possible Parking Solutions:

- The county could improve the parking somewhat by having temporary accessible spaces using cones, or by creating permanent accessible spaces with appropriate signage.
- The parking area could improve somewhat if the county were to clear out the weeds from the parking spaces and clearing/tightly packing the gravel.
- Parking area could improve somewhat with the use of a temporary accessible walkway like a mobi-mat ([beach wheelchair rollout walkway mat and portable boat ramp – Mobi-mat® Shop](#))

Path of Travel

1. Is there a curb cut or curb ramp? Does it meet ADA requirements with a slope of no more than 8.3%?

There is no curb cut or curb ramp.

2. Are there any cracks, deteriorated surfaces or other problems with the curb cut, curb ramp or where the parking joins the path of travel, that may create a barrier to access?

There is no step up between the parking area and the sidewalk; however, the path from the parking to the sidewalk is very sloped and covered with gravel.

3. Are there any barriers along the path of travel, such as large cracks, abrupt changes in level greater than $\frac{1}{2}$ ", poles or fire hydrants or deteriorated surfaces

Yes, many. On this long stretch of sidewalk there are many cracks, openings wider than $\frac{1}{2}$ ", abrupt changes in level, and areas where paving abruptly stops (photos below). Additionally, there is an abrupt change in level right at the threshold of the exterior door.



Photo 1: large break in the sidewalk along the path of travel

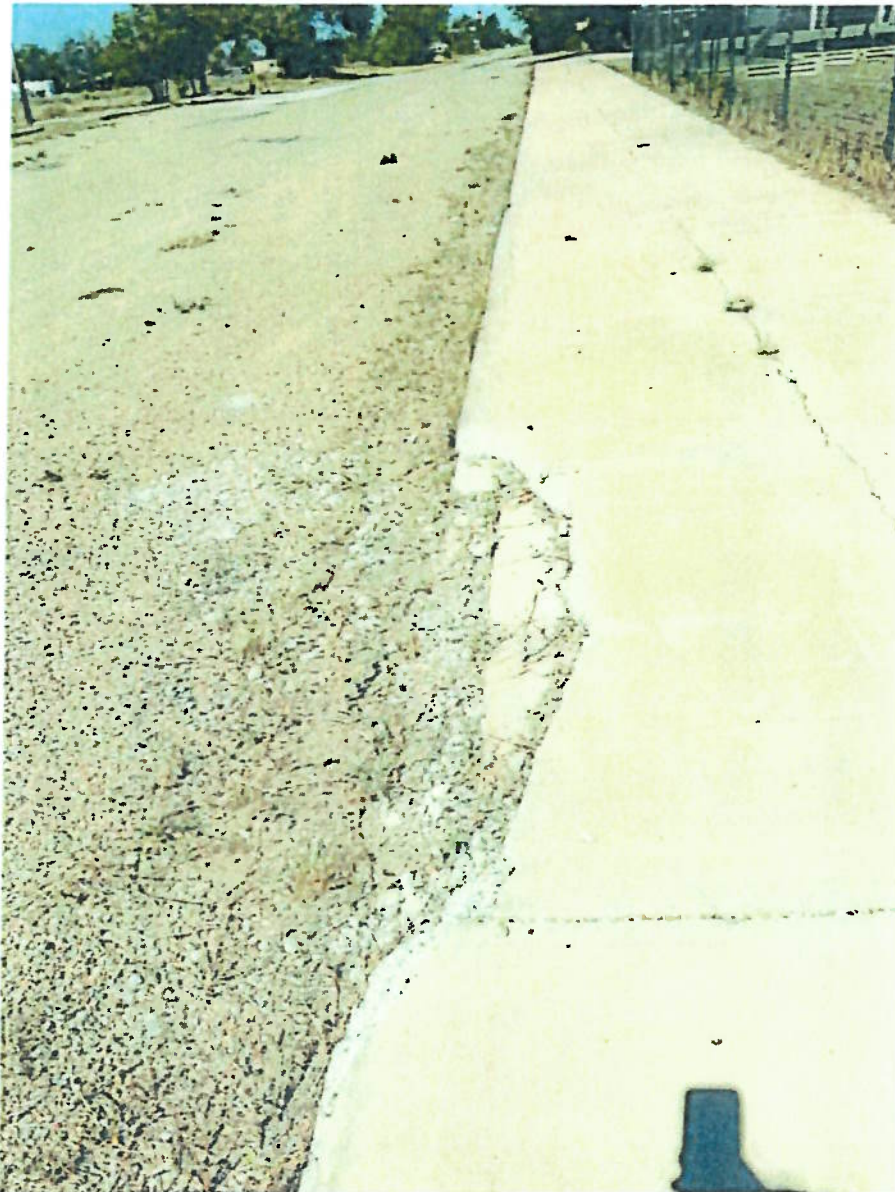


Photo 2: significant decay of the pavement on the edge of the sidewalk



Photo 3: Step up in the middle of the sidewalk



Photo 4: Large crack running down the length of the sidewalk



Photo 5: Crumbling of the curb ramp immediately in front of the community center (not connected to any parking)



Photo 6: Excessively large change in level right in front of main entrance

Possible Parking Solutions:

- Some of the cracks (such as the ones in photo 4) could be filled in with dirt and covered with mats in the areas where they are particularly large
- A mat could be used to cover the area where the sidewalk pavement cuts off (photos 1 and 5)
- A wedge could be used for the two abrupt changes in level (photos 3 & 6)
- Many of the obstacles along the path of travel cannot be solved without more permanent resurfacing measures. The gaps and step-ups are too significant.

4. **Are there appropriately placed signs directing voters to the entrance of the polling site?**

Survey not conducted during an election, so signage was not present.

5. **Is the path of travel 36 inches wide with at least one area that is 48 inches wide making it fully accessible?**

Yes, the path is sufficiently wide.

Ramps

1. **Are there any ramps outside of the polling site?**

N/A

2. **Are there ramps inside the polling site?**

N/A

Doors and Polling Site Entrance

6. **Do all doors have accessible hardware that meets ADA standards?**

Yes.

7. **Do the doors have a power assist with an actuator button?**

No power assist. If this polling site is used, the doors should be left propped open.

8. **Does the exterior door meet the ADA requirement of 8-10 pounds of pull force?**

I could not access the inside of the building, and was unable to test the pull force of the doors.

9. Is the exterior door in good working condition making it easy to open?

I could not access the inside of the building, and was unable to test the functionality of the door.

10. Do the interior doors have accessible hardware and are they in good working condition?

N/A

11. Do the interior doors meet the ADA requirement of no more than 5 pounds of pull force?

N/A

12. Do all doorways, exterior and interior, that a voter must pass through have a minimum clear width of least 32 inches?

Yes, the door is sufficiently wide.

Polling Area

I did not access the polling area on the survey date.

Summary

This polling site has multiple issues with parking and the path of travel. They are as follows:

- There is no designated accessible parking, and the parking area itself is inaccessible due to loosely packed gravel and its steep slope. A mobi-mat could help but may not address the slope issue.
- The path of travel has many obstacles. Most require permanent solutions.
- The main entrance has a step up that exceeds ADA regulations.

Overall, I do not believe this site could feasibly be considered accessible by the time of the election. I recommend that Torrance County look into alternative locations to use as voting sites, such as the Willard Fire Station.

Note: Please read the rest of the report for more detailed accounts of these accessibility issues, as well as proposed solutions.

Note: This site will remain inaccessible for elections unless the temporary or permanent solutions recommended by DRNM are implemented.